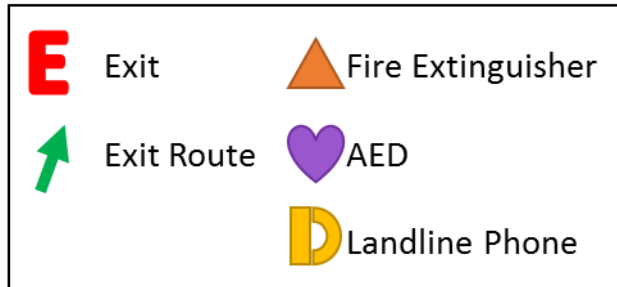


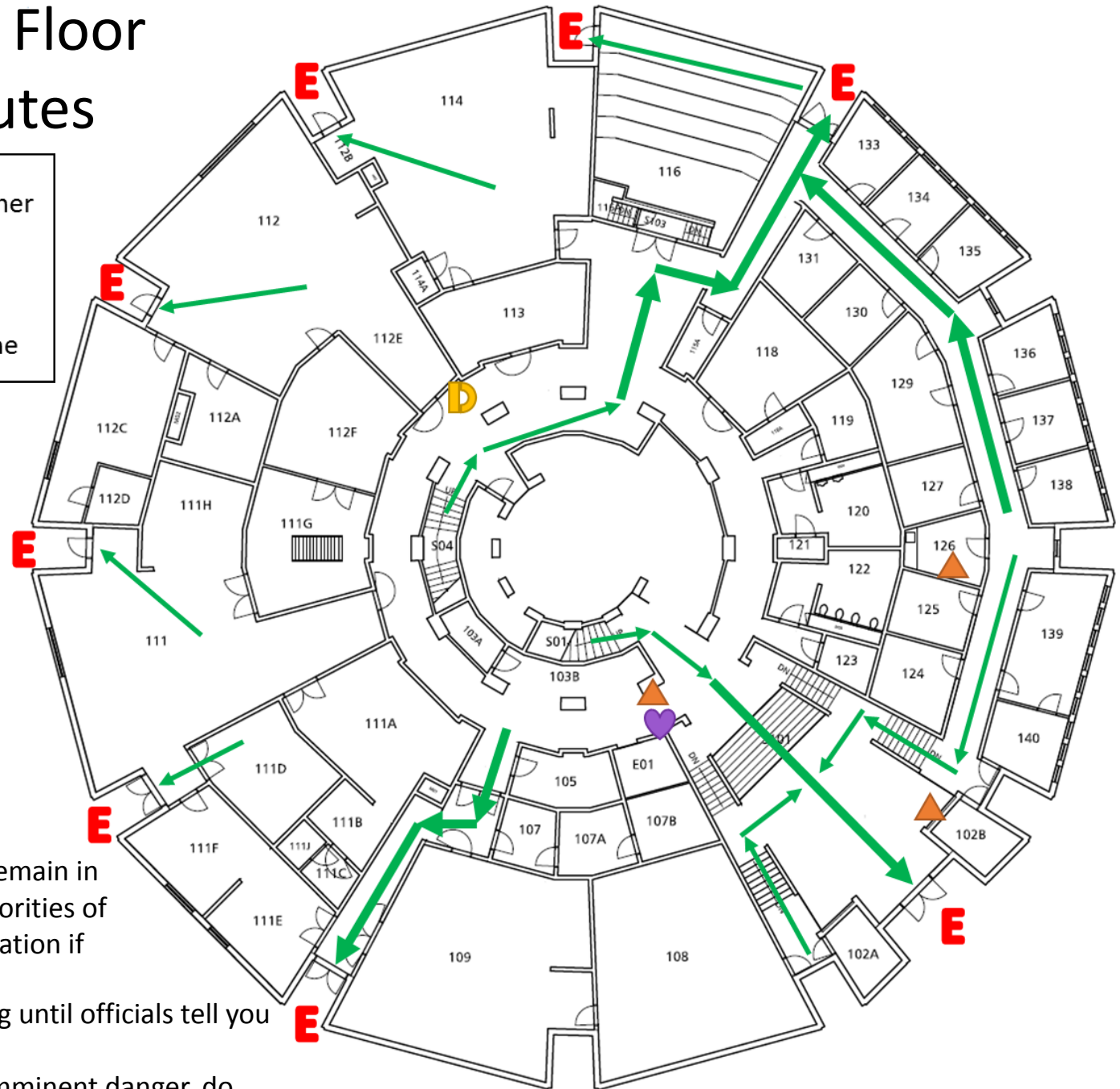
Art Building – 1st Floor

Evacuation Routes

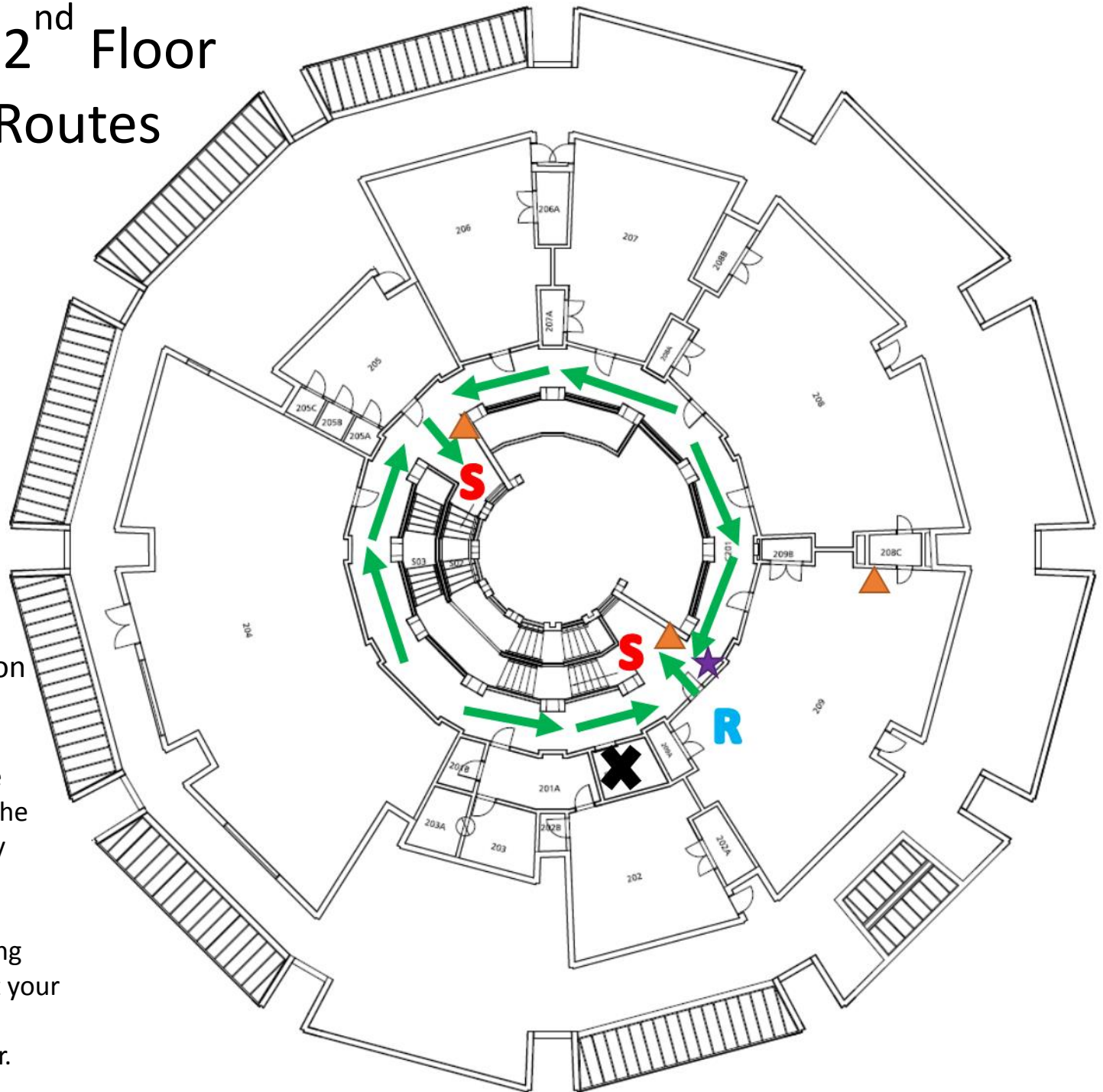
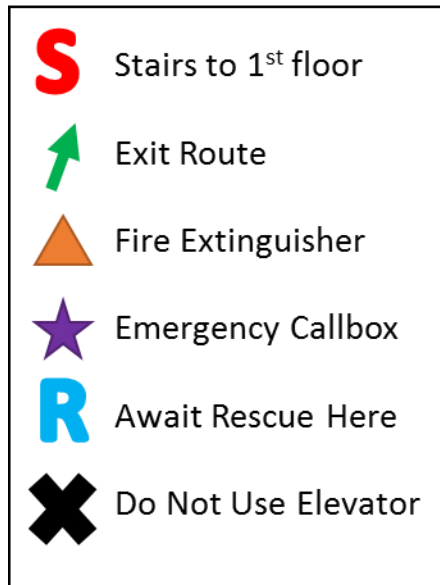


Evacuation Safety Information.

- In case of fire, bomb threat, or other evacuation, close windows and doors and move to the nearest exit.
- Once outside, move away from the building and avoid blocking driveways.
- Have a location set to meet your class or department so that everyone can be accounted for.
- If anyone is missing or had to remain in the building, notify onsite authorities of their location (or presumed location if missing).
- Do not go back into the building until officials tell you it is safe.
- If someone is hurt and not in imminent danger, do not move them. Contact rescue personnel and tell



Art Building – 2nd Floor Evacuation Routes



Evacuation Safety Information

- Never use the elevator in an emergency.
- If you are unable to evacuate during an emergency, press the call button on the emergency callbox.
- In the event of a fire, let the operator know you are moving into the closest room to limit your exposure to smoke.
- AED is located on the 1st floor.