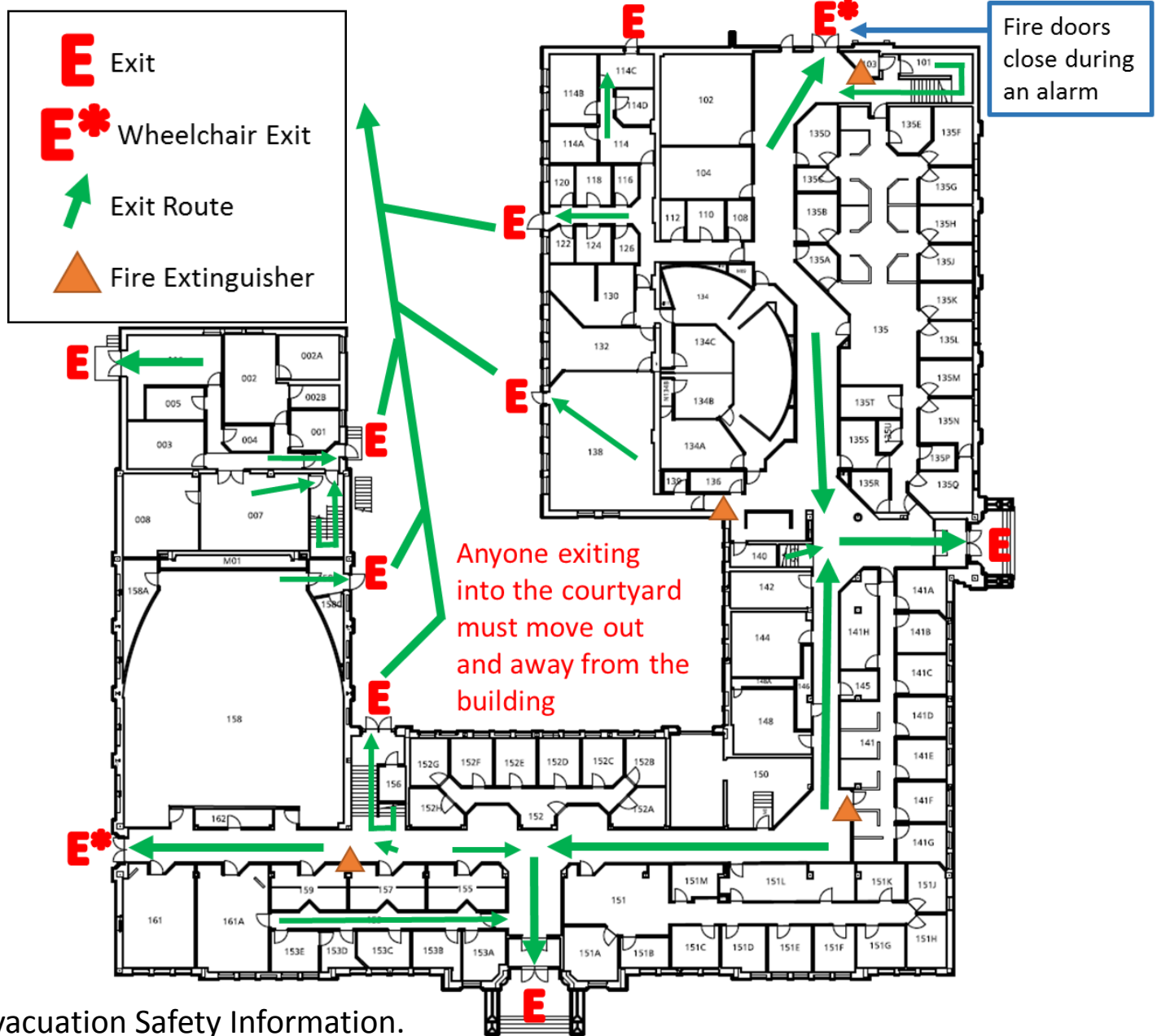


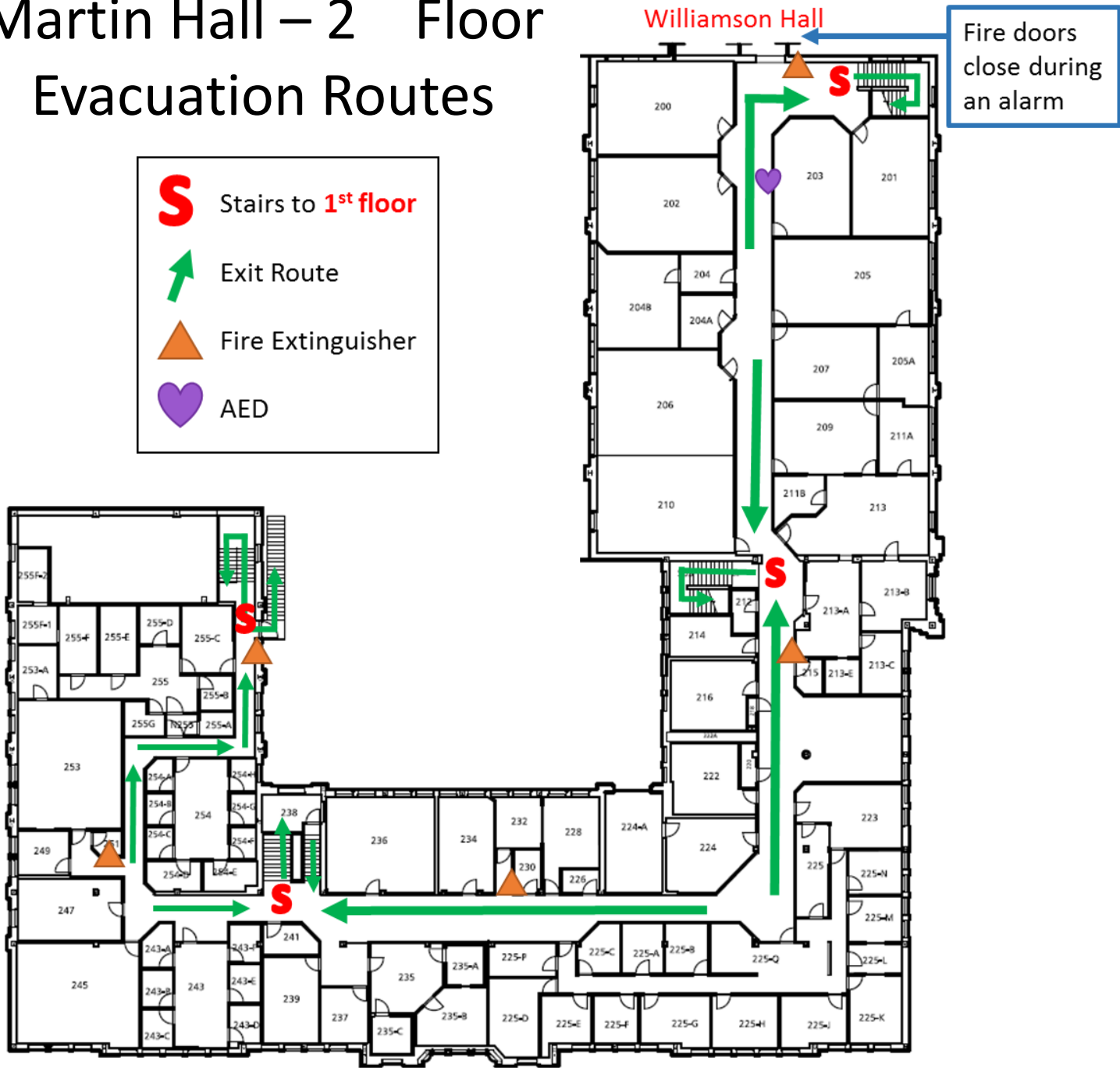
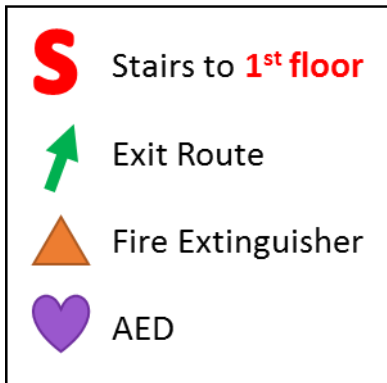
Martin Hall – 1st Floor Evacuation Routes



Evacuation Safety Information.

- In case of fire, bomb threat, or other evacuation, close windows and doors and move to the nearest exit.
- Once outside, move away from the building and avoid blocking driveways.
- Have a location set to meet your class or department so that everyone can be accounted for.
- If anyone is missing or had to remain in the building, notify onsite authorities of their location (or presumed location if missing).
- Do not go back into the building until officials tell you it is safe.
- If someone is hurt and not in imminent danger, do not move them. Contact rescue personnel and tell them where the person is located.
- AED is located on the 2nd floor.

Martin Hall – 2nd Floor Evacuation Routes



Fire doors close during an alarm

Evacuation Safety Information

- If you are unable to move down the stairs during an emergency, the best location to wait is in Williamson Hall (as long as that doesn't take you closer to the emergency).
- If there is a fire and moving to Williamson is not an option, move into a room that is close to one of the stairwells and call 911 to let them know where you are.